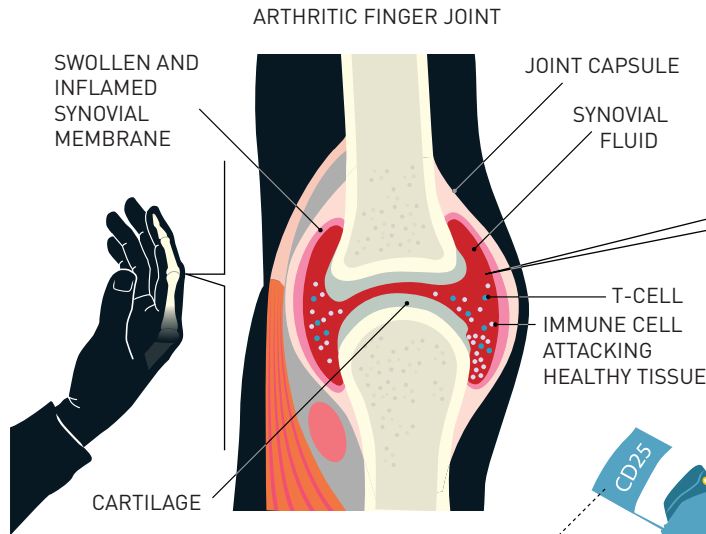


An orderly immune system

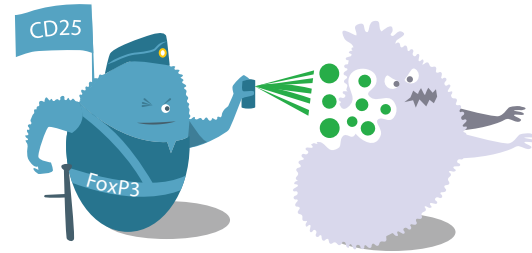
Sometimes cells in the immune system make faulty assessments of what's harmful, and attack healthy tissue. Inflammation often occurs if this happens in a joint, resulting in pain, swelling and heat, like the affected area in the joint below. Regulatory T cells function like security guards in the immune system, usually preventing immune cells from attacking endogenous tissue.



Regulatory T cells have a protein called CD25 on their surface. This is a marker that makes them easily recognisable.

REGULATORY T CELL

IMMUNE CELL ATTACKING HEALTHY TISSUE



1 A regulatory T cell can spray cytokines on an immune cell that misbehaves.

2 It can also attach itself to the surface of the cell and control it that way.



3 A regulatory T cell can also disrupt the immune cell's metabolism so that it is paralysed by exhaustion.

